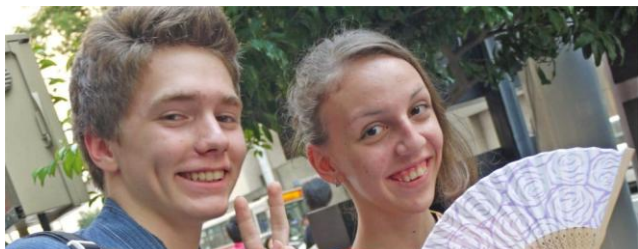


## Japanese Teenage Programme Kyoto 2026



### Can you speak Japanese?

Would you like to learn or improve on your current ability?

The Teenage courses in Japan combine **communication-based study** with the opportunity to immerse yourself in Japanese society and culture and experience daily life in Japan, first-hand. You will be taught by **Japanese native speaking teachers**, who are trained to teach to foreign nationals.

You will share the experience with other **language learners from around the world**, with the same passion for Japanese as yourself!

*Teenage and adult students share the same classes, according to their language level, but teenagers are supervised during the guided activity programme.*

Study in **Kyoto** / July & August

Follow a **2 to 4 week** course

Live with **Japanese hosts**

Join in with the supervised **activities and cultural events** arranged to enrich your course experience

Enjoy **free time** exploring Kyoto

Levels offered	Beginner to Advanced
Locations	
Kyoto:	14/19 yrs
Fukuoka:	14/17 yrs (see separate details)

Course duration	2 - 4 weeks
Number of lessons	20 Japanese lessons per week
Lesson duration	50 minutes
Maximum per class	10 students

#### Activities

Two or three guided activities during the week + guided cultural activities every other Saturday



The Japanese language course is purely communication orientated, ideal for those who wish to study key grammar and conversation skills of the language, but don't require in-depth study.

Classes are made up of 2 lessons of grammar and 2 lessons of conversation per day, focusing on real-life skills.

Learn common sentence patterns and vocabulary with your teacher and use them in practical situations both in and out of the classroom.



## 2026 Course Dates

	Kyoto
July	06, 13, 20, 27
August	03, 10, 17, 24



Public holidays: 20 Jul & 11 Aug 2025

The school arrange a field trip for students (no lessons held)

## 2026 Course Prices

### Course Notes

Course duration: 2, 3 or 4 weeks

### Course dates

Elementary+ level students are welcome on all start dates shown.

Beginners must keep to the dates in **gold**

No lessons (or only 2 lessons max.) are held on the first Monday

Saturday = Free time or a cultural activities with a guide (depending on the date)

Sunday = free day (time for the beach or sight-seeing on you own)

\* Course fees include:

20 Japanese classes plus activities, Saturday activities with a guide and accommodation with hosts, single room, breakfast and evening meal



Kyoto 2026	Course, activities & host accommodation	Airport transfers
		KIX airport
		One way/ Yen 40,000.00
2 weeks:	Yen 214,000.00	Two way/ Yen 80,000.00
3 weeks	Yen 302,000.00	
4 weeks:	Yen 390,000.00	ITM airport
		One way/ Yen 25,000.00
plus admin fee:	Yes 14,000.00	Two way/ Yen 50,000.00

## Japanese Teachers

All teachers are fluent in English and, obviously, Japanese.

They are all Japanese nationals, who are professionally qualified to teach Japanese as a foreign language. They are graduates of a rigorous 420-hour Japanese teacher training course at recognized schools. The length and content of this course was originally specified by the Japanese Ministry of Education, but has now become the standard qualification for professional Japanese language schoolteachers. It is equivalent to a university minor, and the result is a very high standard of teaching.

## Japanese Students

Students come from all over the world, most are complete or false beginner level, with some at elementary / low intermediate level learners, a few are at advanced level.

Age wise students can be any age from 14yrs+ at the school throughout the year (though the majority of teenage students study in July & August). There will be adult students in the school and in all class levels (mixed with teenage students) at the school in the summer, mostly in their 20's or early 30's, but everyone who wants to learn Japanese is welcome.

### Course timetable

The schedule may vary from week to week and will follow one of three formats, from Monday to Friday:  
Classes / 9:30-13:10 or 11:25-15:50 or 14:05-17:45

### Hiragana Alphabet

All ability levels are accepted, from complete beginners to very advanced (though most students will be beginner to low intermediate level).

The school ask that all students to **memorize the HIRAGANA alphabet** prior to arrival.

It should only take you a couple of days (the staff ask that you can read it, not be able to write the letters).



## Group course structure

The core Japanese language course consists of two 50-minute grammar classes and two 50-minute conversation classes each day.

The core focus is always communication skills. You will be expected to review new grammar skills and do related homework on weekday nights, then apply your new skills in the classroom the next day. English explanations will be given only if absolutely necessary (and comparisons between the two grammar methods will be made, which is particularly useful at lower ability levels).

Practical application of the language is encouraged to aid vocabulary retention and real-life fluency. Topical materials are used; news, TV, movies in class to illustrate a point (and engage student interest) and local shops are used (with their permission!) for planned language activity sessions.

All classes are held on a rolling start basis. This means that you enter an ongoing class, partway through that class's syllabus. If your ability level is slightly below the level of that class, we provide free "catch-up classes" to raise you to the appropriate level.

The exception to this is complete beginners, who start on set dates.

If you are the only student at your specific level when you arrive, a new class will be created for you.

The students in your class can change from week to week.

New students may arrive on a Monday, and old students graduate on a Friday.

If you have any concerns or questions, please ask the staff.

They are very friendly and are happy to help!

# Summer Teenage Programme / Summer 2026

## Planned schedule

	Week One	Week Two	Week Three	Week Four
Monday	Welcome and orientation chat + a local tour and then your first 2 lessons	Welcome and orientation chat + a local tour and then your first 2 lessons or 4 lessons	Welcome and orientation chat + a local tour and then your first 2 lessons or 4 lessons	Welcome and orientation chat + a local tour and then your first 2 lessons or 4 lessons
	Free time	Free time	Free time	Free time
Tuesday 4 lessons per day	Japanese lessons between 09.30 to 18.00hrs (schedule varies depending on group placement)	Japanese lessons between 09.30 to 18.00hrs (schedule varies depending on group placement)	Japanese lessons between 09.30 to 18.00hrs (schedule varies depending on group placement)	Japanese lessons between 09.30 to 18.00hrs (schedule varies depending on group placement)
	Free time	Free time	Free time	Free time
Wednesday 4 lessons per day	Japanese lessons between 09.30 to 18.00hrs	Japanese lessons between 09.30 to 18.00hrs	Japanese lessons between 09.30 to 18.00hrs	Japanese lessons between 09.30 to 18.00hrs
	Free time	Free time	Free time	Free time
Thursday 4 lessons per day	Japanese lessons between 09.30 to 18.00hrs	Japanese lessons between 09.30 to 18.00hrs	Japanese lessons between 09.30 to 18.00hrs	Japanese lessons between 09.30 to 18.00hrs
	Free time	Free time	Free time	Free time
Friday 4 lessons per day	Japanese lessons between 09.30 to 18.00hrs	Japanese lessons between 09.30 to 18.00hrs	Japanese lessons between 09.30 to 18.00hrs	Japanese lessons between 09.30 to 18.00hrs
	Free time	Free time	Free time	Free time
Saturday	Day of guided activities: EG. Nintendo Museum in Uji or Cup Noodles Museum or to Himeji Castle			
Sunday	Free time	Free time	Free time	Free day



## Extra Teenage Services:

### Airport pickup & drop off

A representative from the school or accommodation can be booked to wait at the airport to pick the student up from their flight and take them to their accommodation (and back to the airport at the end of their stay).

Latest landing times for flights accepted:  
Kyoto (KIX or ITM Osaka) : 18.00 hrs

### Unaccompanied Minor Services

This is not a service the Japanese can readily offer. It is a very expensive service to arrange. Please do not book this with your airline. Feel free to discuss this with CESA staff if of interest.

### A welcoming atmosphere in the school

The reception and support staff, the teachers and all the other students get to know each other very quickly in these small school environments, so teenagers are well supervised during their time in school and will always have someone to turn to if they have a query, feel homesick or have any other concerns.



### Counselling

A school counsellor is available Monday through Friday. The school provide optional sessions, to ensure that the student is adjusting to life in Japan, classes, and life with their host family.

### Emergency contact numbers

The school staff offer a 24-hour emergency contact number that can be used by the student him/herself or parents calling from overseas, in the event of an emergency.

### SIM card rentals

The school can recommend rental providers that allow teenagers to buy suitable SIMs.



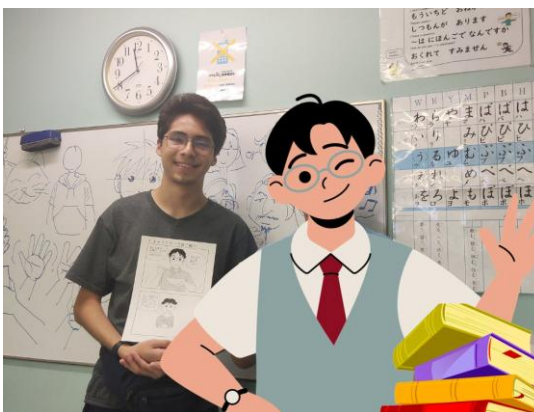
# Accommodation

## Hosts

Students are placed with Japanese hosts and will be provided with breakfast and the evening meal by the hosts. Students will be asked to complete a short survey, prior to host accommodation arrangement.



Age:	14 / 17 yrs	Kyoto
Facilities:	Shared bathroom	Common areas
Internet:	Not guaranteed.	Please request
Meals included:	Breakfast/dinner	Mon-Sun
Bedding:	Included	
Toiletries:	Toiletries not included	Towels not included
Sharing possible?	Yes, if travelling with a friend	
Smoking allowed?	No	
Min length of stay	2 weeks	
Curfew	Approx 9/10pm	
Transportation fees	Around 500 round trip	
Distance to school	60 to 90 mins (by bus/train)	



Facilities:  
Bed (sheets/blankets/etc provided)  
Desk and chair, Air conditioning  
Internet (not guaranteed, and might be wired-access only, so bring your own LAN cable or buy a cheap wifi router from school if required)  
Closet (not guaranteed)/clothes rack  
Fully-equipped kitchen  
TV / DVD player (not guaranteed)  
Washing machine  
\*important: please ask permission before using the house's equipment or facilities

## Ready to enrol?

Please complete the [CESA Enrolment Form online](#) or call the CESA office and we can enrol the student/s over the phone.

On receipt of your details, we will enrol you on the course and send confirmation of your booking, an invoice and a Briefing Pack.

**Japanese courses were in huge demand in 2025, so please book early for 2026 or you are likely to miss out.**

A deposit of €300.00, £250.00 or US\$ 350.00 is required at the time of booking (or full fees if enrolling close to the start date).

[www.cesalanguages.com](http://www.cesalanguages.com)  
+44 1209 211800  
[info@cesalanguages.com](mailto:info@cesalanguages.com)

**CESA**  
Languages Abroad